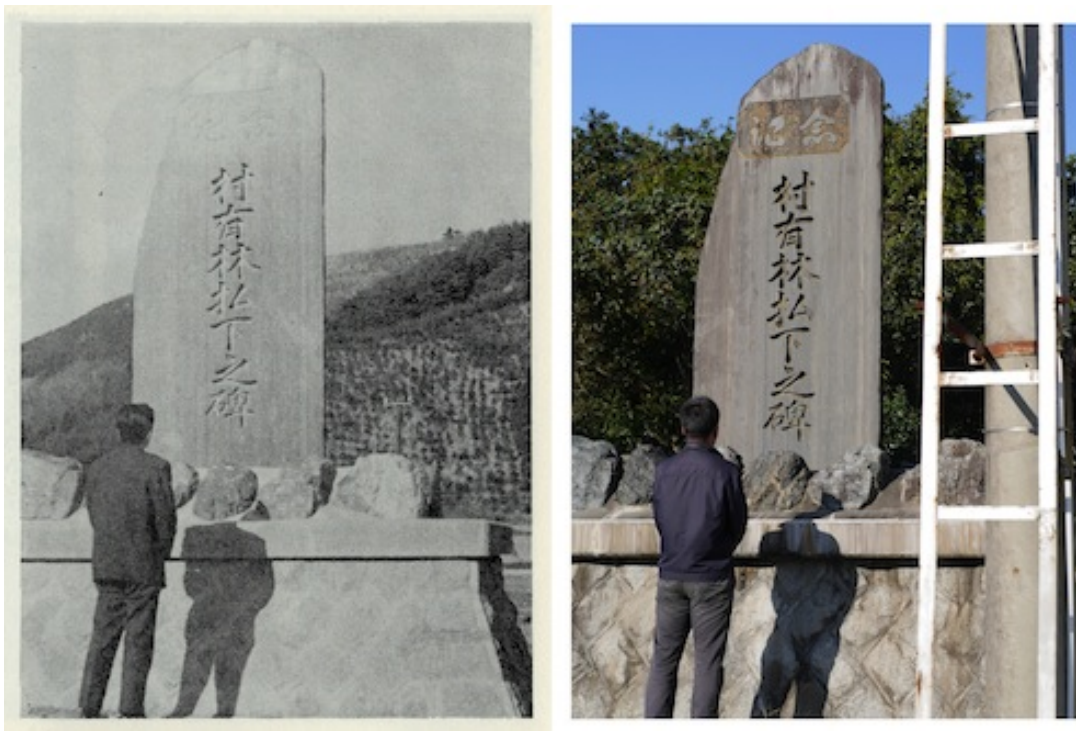


2017/01/22

## Kota Takeuchi

**“Photographs turn stone monuments into mere stone, but even so people take them.”**



images from "Take Stone Monuments Twice"

left : Ichiro Saito "Kindai Iwaki Keizaishikô (Economic History in the Modern Age of Iwaki)" (1976) p203

right : photo by Kota Takeuchi

**session : 2017/2/3(Fri) – 3/4(Sat) 11:00 – 19:00**

**\*closed on Sun. Mon. and public holidays**

**opening reception : 2/3(Fri) 18:00 – 20:00**

**venue : SNOW Contemporary**

## ▪Kota Takeuchi

"Photographs turn stone monuments into mere stone, but even so people take them."

---

SNOW Contemporary is pleased to announce Kota Takeuchi's solo exhibition "Photographs turn stone monuments into mere stone, but even so people take them." from Friday, February 3rd through Saturday, March 4th, 2017.

In the past, Takeuchi has exhibited works that question the media when converting memories into transcriptions, or question ourselves as recipients of information, through solo exhibitions including "Open Secret" (2012 / SNOW Contemporary, Tokyo) in which he suddenly appeared in front of the Fukushima Dai-ichi nuclear plant live monitoring camera as an agent of a Finger Pointing Worker, and highlighted consciousness of viewers of the disaster as well as self-consciousness of anonymous performers, "Sight Consuming Shadows" (2013 / Mori Art Museum, Fukushima) where he traced buried memories including artifacts, "Eyes on Hand" (2014 SNOW Contemporary, Tokyo) where he captured our landscapes in which we acquire information from our hand (=mobile phone).



left : "Site Consuming Shadow", MORI Museum, Fukushima/Japan  
right : "Re : Eyes on Hand", SNOW Contemporary, Tokyo/Japan, photo : Keizo Kioku

Since 2013, Takeuchi has taken photographs of approximately 170 existing gravestones referring to the photographs on *Economic History in the Modern Age of Iwaki* (1976), written by Ichiro Saito, which he found in a library in Iwaki City, Fukushima Prefecture. This exhibition, which counts as his third solo exhibition at SNOW Contemporary, would be reconstructed as an installation consisted of scanned images of the book as well as photographs in which Takeuchi took himself.

Through these works, Takeuchi indicates the durations of media in our current society where massive data is overflowing by technological evolution, as well as conversions between the different medias, and portrays the difficulties of inheriting data over generations, and discloses human beings confronting oblivion.

## ■Kota Takeuchi biography

---

2008 Tokyo University of the Arts, B.A. in Department of Inter Media Art (Tokyo/Japan)

### 【SOLO EXHIBITIONS】

- 2016 "Memory Bug", The Arts Catalyst (London/UK)
- 2015 "Re : Eyes on Hand", SNOW Contemporary (Tokyo/Japan)
- 2013 "Site Consuming Shadow", MORI Gallery (Fukushima/Japan)
- 2012 "Open Secret", SNOW Contemporary (Tokyo/Japan)

### 【SELECTED GROUP EXHIBITIONS】 (\*including as an agent of Finger Pointing Worker)

- 2016 "PERPETUAL UNCERTAINTY" Bildmuseet (Umeå/Sweden)
- 2015 "Don't Follow The Wind", Exclusion zone of the Fukushima Daiichi Nuclear Power Plant incident (Fukushima/Japan)  
"Don't Follow The Wind non-Visitor-Center", Watari-Um Museum (Tokyo/Japan)
- 2014 "The Fifth Season", James Cohan Gallery (NewYork/US)  
"Good Morning Mr Orwell 2014", Nam June Paik Art Center (Seoul/Korea)  
"Censorship: The 7th Move on Asia", Altanative Space Loop (Seoul/Korea)  
"Three Years After" Wilfrid Israel Museum (Hazorea/Israel)
- 2013 "Media / Art Kitchen", Bangkok Art & Culture Centre (Bangkok/Thailand)  
"Art/Domestic: Temperature of the Future after Takashi Azumaya"  
ARATANIURANO|YAMAMOTO GENDAI (Tokyo/Japan)  
"MOT Collection After images of tomorrow", Museum of Contemporary Art Tokyo (Tokyo/Japan)  
"SIDE CORE —Body / Media / Graffiti\_ Terratoria (Tokyo/Japan)  
"The 42th exhibition of Iwaki", Iwaki City Art Museum (Fukushima/Japan)
- 2012 "Kashiwa City Jack", ARTLINE KASHIWA 2012, (Chiba/Japan)  
"Tomorrow is today I see for the first time", Snow Contemporary (TOKYO/JAPAN)  
"Daegue Photo Biennale 2012", Center for Developing Culture (Daegu/Korea)  
"Dance on a Thin Line", Center for Developing Culture (Daegu/Korea)  
"Turning Around", Watarium (Tokyo/Japan)
- 2011 "Social Dive - Exploratory Imagination" 3331 Arts Chiyoda (Tokyo/Japan)
- 2010 "Eun Hyung Kim, Emilija Skarnulyte, Kota Takeuchi" RM Gallery (Auckland/New Zealand)  
"THE 10th Gunma Biennale for Young Artists 2010", The Museum of Modern Art (Gunma/Japan)  
"Kyoto Open Studios 2010", Kenbundou-Studio (Kyoto/Japan)
- 2009 "101TOKYO Contemporary Art Fair 2009 '101 DISCOVERIES'" AKIBA-SQUARE (Tokyo/Japan)  
"FRESH SELECTION" ARTZONE (Kyoto/Japan)
- 2008 "FRESH" URBAN BACK-SIDE LABORATORY R2 (Chiba/Tokyo)

### 【RESIDENCY PROGRAM】

- 2010 "Wongok-dong Recipe", Litmus Community Space (Ansan/Korea)

### 【AWARD】

- 2013 "The 42th exhibition of Iwaki"
- 2010 encouragement award "THE 10th Gunma Biennale for Young Artists 2010"

**【PUBLIC COLLECTION】**

Museum of Contemporary Art Tokyo, Kadist Art Foundation

■ **inquiries** - We thank you for your collaboration in helping advertising this exhibition.

---

**SNOW Contemporary**

404 Hayano Bldg. 2-13-12 Nishiazabu, Minato-ku, Tokyo, JAPAN 106-0031

tel & fax : +81 (0)3 6427 2511

mail : [snow@officekubota.com](mailto:snow@officekubota.com)

HP : [snowcontemporary.com](http://snowcontemporary.com)